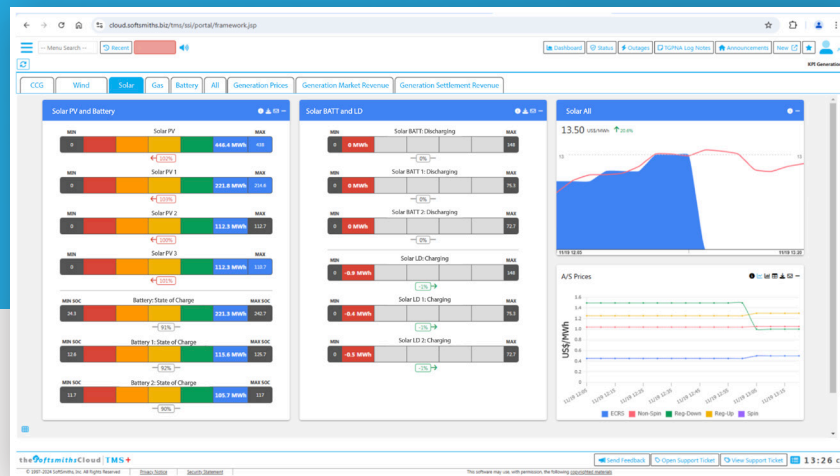




Softsmiths

Generation KPI Dashboard Pack



Actionable Insights for Real-Time Decision Making Across All Energy Assets

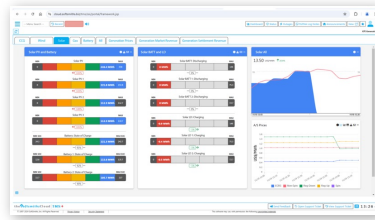
Overview of Real-Time Insights for All Generation & Storage Assets

In an evolving energy market, managing diverse generation and storage assets requires precision and agility. The SoftSmiths Generation KPI Dashboard Pack empowers operators with comprehensive visibility into real-time SCADA data, enabling optimization for photovoltaic (PV) systems, wind turbines, hydro plants, gas generators, batteries, and more.

Designed for decision-makers and energy professionals, this suite of dashboards integrates performance, market, and financial data into synchronized, intuitive visualizations. The result: smarter decisions, improved efficiency, and maximized profitability.

With the ability to support any SCADA-enabled asset, this dashboard pack is your go-to solution for monitoring and optimizing complex energy operations.

Generation State Overview



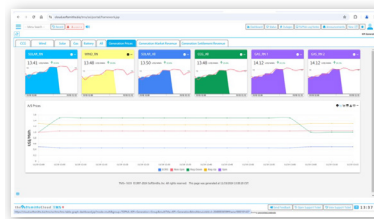
Overview:

Provides a real-time snapshot of current generation levels compared to potential capacity for all SCADA-enabled assets, including solar, wind, hydro, and gas generators.

Key Benefits:

- Optimize operations based on real-time-price trends.
- Make informed decisions for market-participation and pricing strategies.

Generation Prices



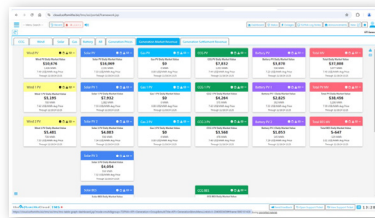
Overview:

Tracks real-time energy prices for all generation types, showing site-specific trends and market dynamics.

Key Benefits:

- Monitor asset utilization in real time.
- Identify opportunities for increased efficiency and operational adjustments.

Generation Market Revenue



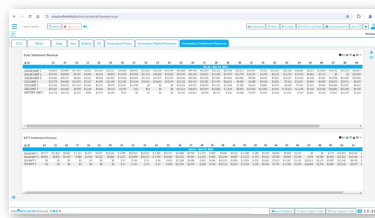
Overview:

Displays daily revenue contributions for each generation and storage unit, consolidating financial data for actionable insights.

Key Benefits:

- Optimize profitability by identifying trends in settlement revenue.
- Track the financial impact of operational changes.

Settlement Revenues



Overview:

Provides detailed settlement revenue data for each generation and storage asset, offering daily revenue insights for strategic planning.

Key Benefits:

- Optimize profitability by identifying trends in settlement revenue.
- Track the financial impact of operational changes.

Summary of Benefits



Real-Time Visibility:

Harness SCADA data to monitor generation and storage performance across all assets.



Informed Decisions:

Leverage synchronized insights to optimize operations and profitability.



Comprehensive Support:

Supports PV, wind, hydro, gas, batteries, and other generation types



Generation Spotlight



Overview:

Synchronizes generation, real-time prices, and market value into a single dashboard with overlay capabilities for advanced analytics.

Key Benefits:

- Correlate generation performance with market conditions.
- Perform deep-dive analysis for data-driven operational improvements.

Current Generation vs. Potential Capacity



Overview:

This dashboard provides a real-time snapshot of energy generation levels from Generation (GEN) and battery (BATT) systems across multiple sites.

Key Benefits:

- Visually compares current output against the maximum potential capacity.
- Offers insights into how much of each site's capability is currently being utilized.

SoftSmiths' Generation KPI Dashboard Pack is the ultimate tool for energy operators looking to stay ahead in a competitive market. With its advanced visualization capabilities and flexible SCADA integration, this pack ensures you're always ready to make the right decisions

Empowering the Future of Energy Management

Founded in 1997, SoftSmiths combines deep industry knowledge and technical expertise to deliver cloud-based solutions for power, gas, and renewable markets. Our flexible platform helps energy companies excel in today's competitive landscape.

Why Choose SoftSmiths?

- Proven Reliability
- Flexible, Modular Solutions
- Future-Focused Innovation